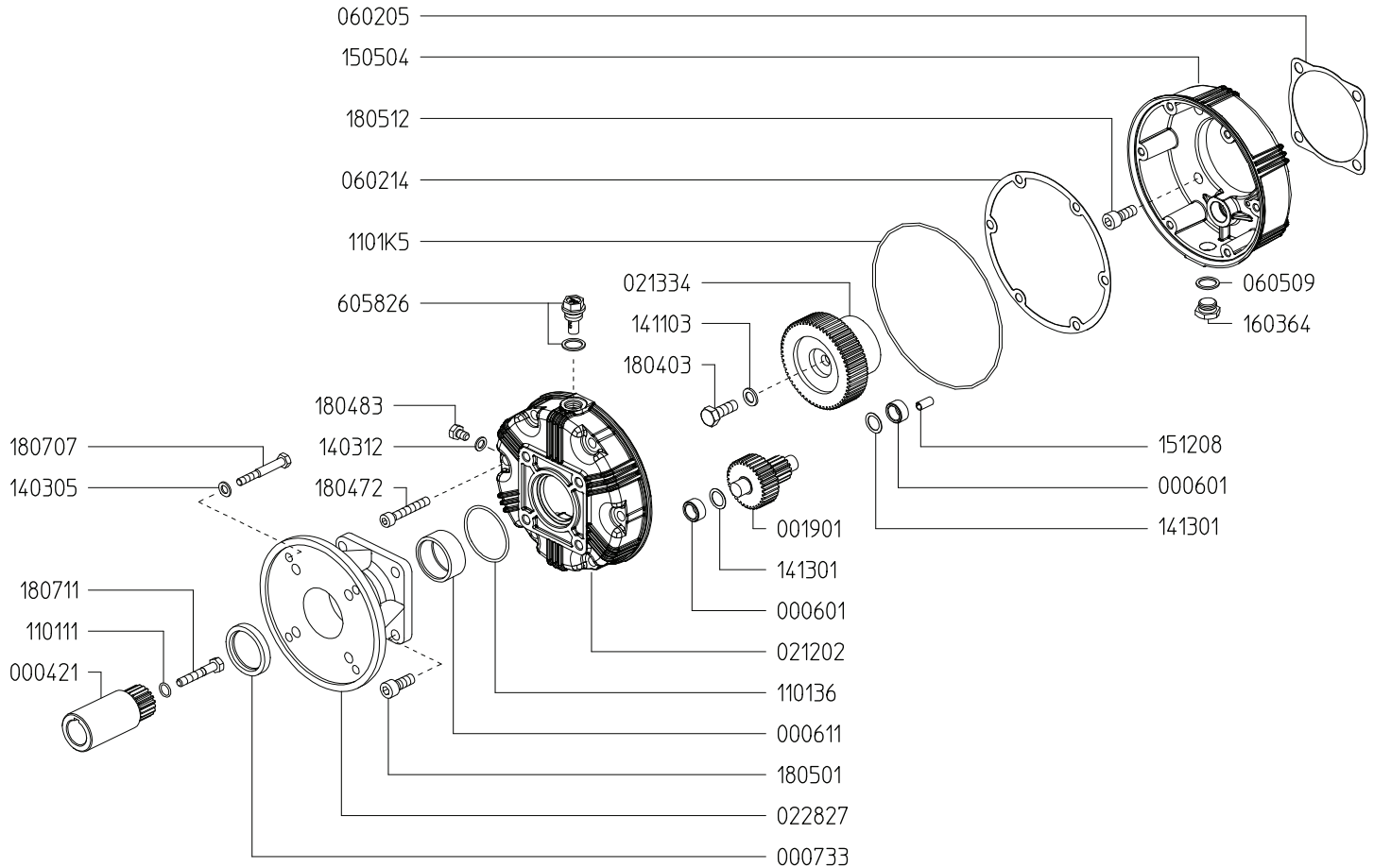


**GAS ENGINE GEAR REDUCTION FOR
GAMMA-62 PLUNGER PUMPS
on up to 16.0 HP GAS ENGINES with 1" SHAFTS
REQUIRES 17.25 OZ. 90W GEAR LUBE**



Revised 2-10-2025

| Part # | Description | Qty | Part # | Description | Qty |
|---------|----------------------|-----|---------|-------------------------|-----|
| 0004.21 | GEAR SHAFT "S164-1" | 1 | 1403.05 | WASHER D8.4 | 4 |
| 0006.01 | BUSHING D15 | 2 | 1403.12 | GASKET D8.5 | 1 |
| 0006.11 | BUSHING D40 | 1 | 1413.01 | WASHER D15 | 2 |
| 0007.33 | OIL SEAL D40 | 1 | 1505.04 | GEAR BODY "S164" | 1 |
| 0019.01 | GEAR SHAFT "S164" | 1 | 1512.08 | PLUG D4X16 | 1 |
| 0212.02 | REDUCER COVER "S164" | 1 | 1603.64 | PLUG G3/8 | 1 |
| 0213.34 | GEAR "S164-G62" | 1 | 1804.03 | HEX BOLT M10X30 | 1 |
| 0228.27 | COUPLER "S164-VA" | 1 | 1804.72 | HEX BOLT M8X50 | 6 |
| 0602.05 | GASKET | 1 | 1804.83 | HEX BOLT M8X12 | 1 |
| 0602.14 | GASKET "S164" | 1 | 1805.01 | ALLEN BOLT M10X25 | 4 |
| 0605.09 | GASKET D17 | 1 | 1805.07 | ALLEN BOLT M10X40 | 4 |
| 1101.11 | O-RING - GEAR SHAFT | 1 | 1807.07 | HEX BOLT 5/16-24X1" UNF | 4 |
| 1101.36 | O-RING - BUSHING | 1 | 1807.11 | HEX BOLT 5/16-20X2" UNF | 1 |
| 1101.K5 | O-RING - GEAR CASE | 1 | 6058.26 | OIL PLUG G3/8 | 1 |